

# MPAGE4

PAGING STATION

*4-zone Desktop Paging Station*



## USER MANUAL

# INDEX

1. IMPORTANT REMARK.....	3
2. IMPORTANT SAFETY INSTRUCTIONS.....	4
3. IMPORTANT NOTE.....	5
4. INTRODUCTION.....	5
5. INSTALLATION and CONNECTION.....	6
Wiring of RJ-45 connector.....	6
6. OPERATION.....	8
7. FUNCTIONS LIST.....	9
8. FUNCTIONS DIAGRAM.....	9
9. TECHNICAL CHARACTERISTICS.....	10

## 1. IMPORTANT REMARK




WARNING: SHOCK HAZARD - DO NOT OPEN  
AVIS: RISQUE DE CHOC ÉLECTRIQUE - NE PAS OUVRIR



The lightning flash with arrowhead symbol, within an equilateral triangle, is intended to alert the user to the presence of uninsulated “dangerous voltage” within the product’s enclosure that may be of sufficient magnitude to constitute a risk of electric shock to persons.



The exclamation point within an equilateral triangle is intended to alert the user to the presence of important operating and maintenance (servicing) instructions in the literature accompanying the appliance.

**WARNING (If applicable):** The terminals marked with symbol of “” may be of sufficient magnitude to constitute a risk of electric shock. The external wiring connected to the terminals requires installation by an instructed person or the use of ready-made leads or cords.

**WARNING:** To prevent fire or shock hazard, do not expose this equipment to rain or moisture.

**WARNING:** An apparatus with Class I construction shall be connected to a mains socket-outlet with a protective earthing connection.

## 2. IMPORTANT SAFETY INSTRUCTIONS

1. Read these instructions.
2. Keep these instructions.
3. Heed all warnings.
4. Follow all instructions.
5. Do not use this apparatus near water.
6. Clean only with dry cloth.
7. Do not block any ventilation openings. Install in accordance with the manufacturer's instructions.
8. Do not install near any heat sources such as radiators, heat registers, stoves, or other apparatus (including amplifiers) that produce heat.
  
9. Do not defeat the safety purpose of the polarized or grounding type plug. A polarized plug has two blades with one wider than the other. A grounding type plug has two blades and a third grounding prong. The wide blade or the third prong are provided for your safety. If the provided plug does not fit into your outlet, consult an electrician for replacement of the obsolete outlet.
10. Protect the power cord from being walked on or pinched particularly at the plugs, convenience receptacles, and at the point where they exit from the apparatus.
11. Only use attachments/accessories specified by the manufacturer.
12. Unplug the apparatus during lightening sorts or when unused for long periods of time.
13. Refer all servicing to qualified personnel. Servicing is required when the apparatus has been damaged in any way, such as power supply cord or plug is damaged, liquid has been spilled or objects have fallen into the apparatus, the apparatus has been exposed to rain or moisture, does not operate normally, or has been dropped.
14. Disconnecting from mains: When switching off the POWER switch, all the functions and light indicators of the unit will be stopped, but fully disconnecting the device from mains is done by unplugging the power cable from the mains input socket. For this reason, it always shall remain easily accessible.
15. Equipment is connected to a socket-outlet with earthing connection by means of a power cord.
16. The marking information is located at the bottom of the unit.
17. The apparatus shall not be exposed to dripping or splashing and that no objects filled with liquids, such as vases, shall be placed on apparatus.



**WARNING:** This product must not be discarded, under any circumstance, as unsorted urban waste. Take to the nearest electrical and electronic waste treatment centre.

NEEC AUDIO BARCELONA, S.L. accepts no liability for any damage that may be caused to people, animal or objects due to failure to comply with the warnings above.

### 3. IMPORTANT NOTE

Thank you for choosing our Ecler **MPAGE4, 4 zone desktop paging station!**

It is **VERY IMPORTANT** to carefully read this manual and to fully understand its contents before any connection in order to maximize your use and get the best performance from this equipment.

To ensure optimal operation of this device, we strongly recommend that its maintenance be carried out by our authorised Technical Services.

Ecler **MPAGE4** comes with a **3-year warranty**.

### 4. INTRODUCTION

The MPAGE4 is a desktop *paging* console compatible with ECLER MIMO54 and DAM614 digital audio matrix. Its keypad, LED indicators and goose-neck microphone allow to select zones being paged, to know if these zones are busy, to capture the voice message and broadcast it in real time to the destination zones.

The principal features of the MPAGE4 are:

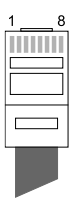
- 4 zone selection keys (ZONE 1 to ZONE 4) (3)
- 1 key to select all 4 zones simultaneously (ALL) (4)
- 1 pager activation key (PAGE) (1)
- 6 LED status indicators (one per key)
- Goose-neck microphone (5)
- Configurable carillon melody (6)
- RJ-45 connector for connection of CAT5 standard cable to MIMO54 or DAM614 PAGER port (7)

## 5. INSTALLATION and CONNECTION

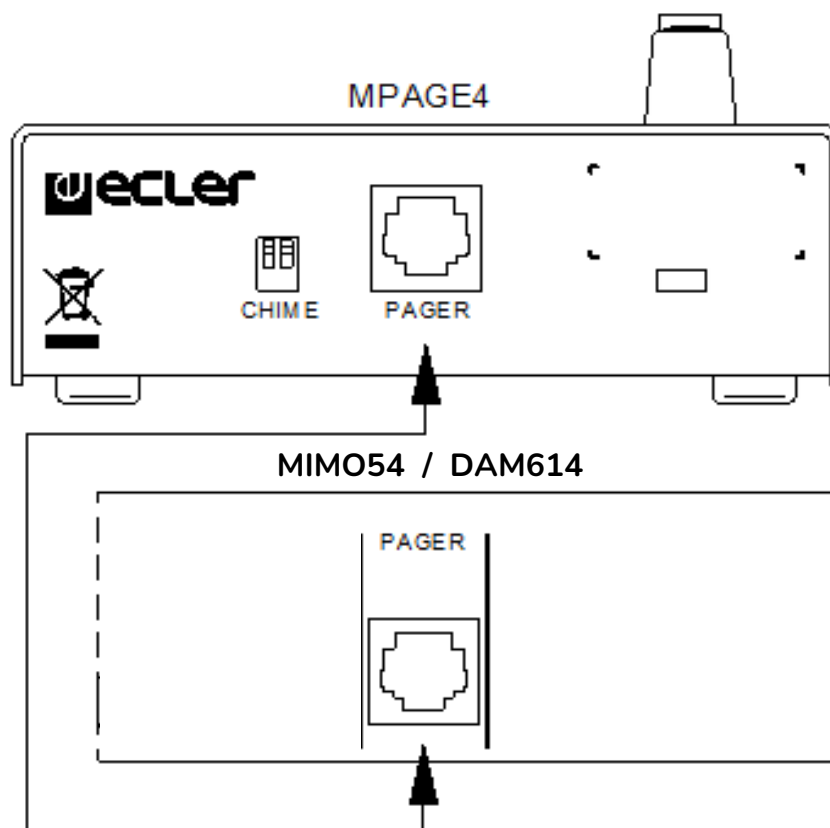
Installing a MPAGE4 unit consists of the following steps:

1. Installation of wiring using a standard CAT5 cable between the BASE connector of the MPAGE4 (7) and the PAGER connector on the rear panel of the MIMO54 / DAM614.

Wiring of RJ-45 connector		
Pin 1 to Pin 1	White/orange	MIC+
Pin 2 to Pin 2	Orange	MIC-
Pin 3 to Pin 3	White/green	GND
Pin 4 to Pin 4	Blue	VCC (+10V)
Pin 5 to Pin 5	White/blue	ZONE 1
Pin 6 to Pin 6	Green	ZONE 2
Pin 7 to Pin 7	White/brown	ZONE 3
Pin 8 to Pin 8	Brown	ZONE 4



The cable transmits the zone selection control signals as well as the audio signal of the goose-neck microphone and the signal for the carillon melody, if activated. The *phantom* power required by the MPAGE4 unit is also supplied by the MIMO54 / DAM614 using the same cable.



2. Activation of the carillon melody (optional). With the two CHIME (6) micro-switches on the rear panel of the MPAGE4 it is possible to: deselect the carillon melody (both set to OFF) or select one of three carillon melodies combining the ON and OFF positions (ON-OFF, OFF-ON and ON-ON). ON position = micro switch down.
3. Level adjustment: the two adjustment potentiometers are accessed by removing the lid from the unit:
  - MIC (9): adjusts the microphone signal gain
  - CHIME (8): adjusts the level of the carillon melody signal (0-100%)

The console (5) microphone is a non-extractable *electret cardioid* type mounted on a flexo. It is supplied with an "*anti-pop*" foam windshield.

The audio output is balanced and is sent through pins 1, 2 and 3 of the RJ-45 connector on the rear panel of the unit for reception by the MIMO54 / DAM614.

## 6. OPERATION

Once the MPAGE4 unit is connected to the MIMO54 or DAM614, the procedure for sending messages is as follows:

1. Selection of receiving zones by pressing:
  - keys ZONE 1 to ZONE 4 (3) as desired (if LED indicators are lit it means that the zone is selected)
  - or the ALL (4) key to select all 4 zones simultaneously (if the LED indicator is lit it means that ALL zones are selected)All of the keys are mechanically interlocked (activated by pressing once and deactivated by pressing again)
2. Hold the PAGE (1) key down ( “push to talk” type key without mechanical interlocking) while the voice message plays through the built-in goose-step microphone. The LED (2) on the key is lit while the key is pressed down (active message)

**Note:** if the carillon melody was activated, we recommend waiting a short period of time (3-4 seconds) after pressing the PAGE key and before starting the voice message in order to prevent the message from overlapping with the melody

3. If necessary, cancel the individual zone selection (ZONE 1 to 4) or the selection of all zones (ALL) by pressing the keys again, verifying that the LEDs go out. If the selection is not cancelled, the next message that is sent will be delivered to the selected zones.

With MIMO54 or DAM614 it is also possible to set zones permanently selected to always receive voice messages sent from the MPAGE4 unit, regardless of whether or not they have been selected via the buttons.

To set it, on the front panel of the MIMO54 or DAM614, select the ZONE switch for the required zone(s) in the ON position and then press the button of input 6. The corresponding LED lights in blue to indicate that the selected zone has been permanently enabled as a PAGER.

Repeat the process for each zone you wish to permanently enable.

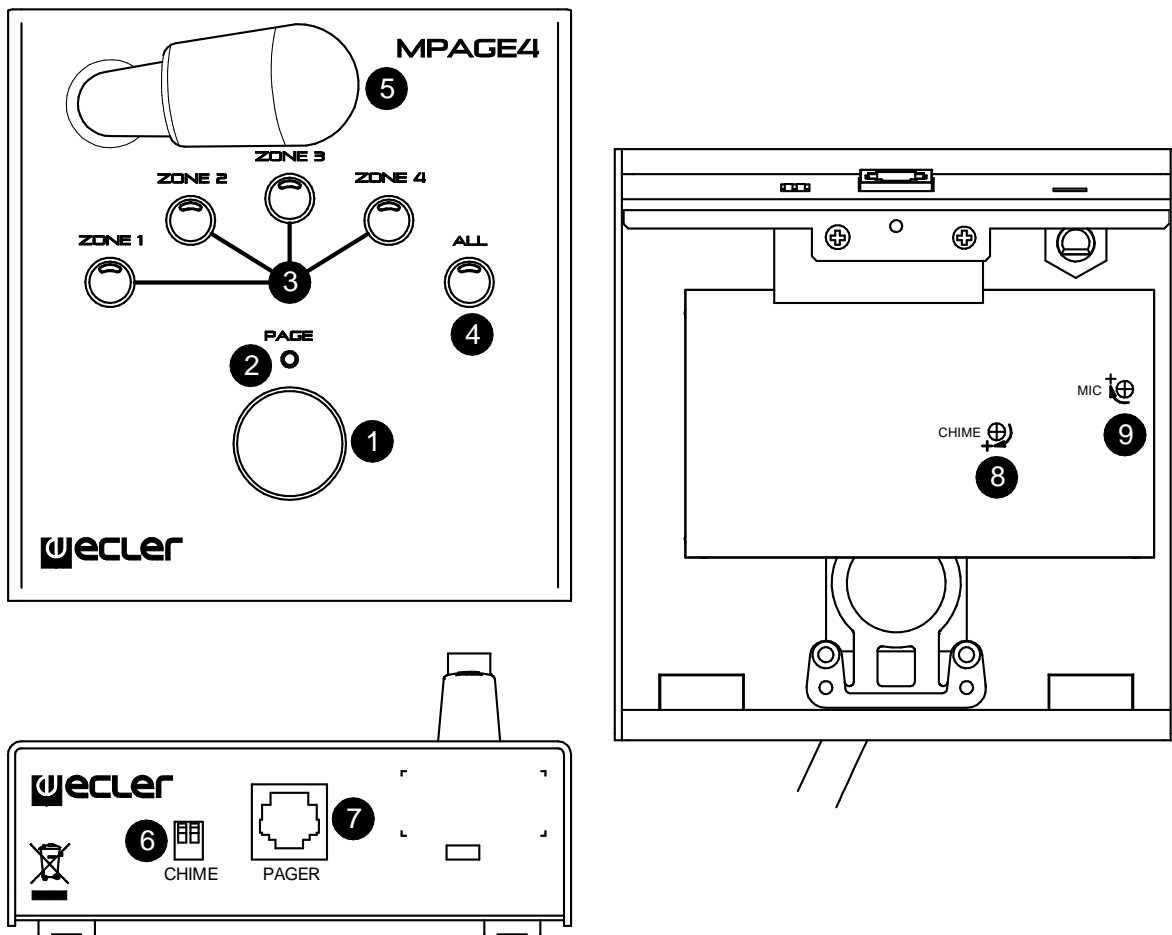
**NOTE:** Remember that on the MIMO54, when the EVAC working mode is active for input number 5 (Evacuation/Emergency), the ZONE destination zone selector and the zones selected for the MPAGE4 Unit are disabled. In this working mode, the signal from the PAGING programme and warnings in **ALL** of the unit's zone outputs are muted and replaced by the signal in input 5 or the evacuation/emergency message.



## 7. FUNCTIONS LIST

1. PAGE key
2. PAGE indicator
3. Zone keys
4. ALL key
5. Goose-neck microphone
6. CHIME selector
7. R-45 connector, PAGER
8. Adjust level of the CHIME carillon melody signal
9. Adjust MIC microphone signal gain

## 8. FUNCTIONS DIAGRAM



## 9. TECHNICAL CHARACTERISTICS

### MPAGE4

Microphone type	Non removable gooseneck condenser microphone
Polar pattern	Unidirectional
Microphone frequency response	50Hz – 18KHz (-10dB)
Output level	0dBV @ 104dB SPL $\pm$ 7dB (internal adj.)
Chime	DIP selector for mode 1, 2 or 3 or none
Maximum audio cable length	Twisted pair 20m Shielded 800m (provided that minimum voltage is assured)
Number of paging zones	4
Indicators	Selection LED on all keys
Power supply	+6 to +15V
Maximum power consumption	40mA
Connector	RJ-45
Dimensions (microphone excluded)	W 120mm x D 126mm x H 43mm
Weight	650g
Included accessories	Windscreen, connector

All product characteristics are subject to variation due to production tolerances. **NEEC AUDIO BARCELONA S.L.** reserves the right to make changes or improvements in the design or manufacturing that may affect these product specifications

For technical queries contact your supplier, distributor or complete the contact form on our website, in [Support / Technical requests](#).

Motors, 166-168 08038 Barcelona - Spain - (+34) 932238403 | [information@ecler.com](mailto:information@ecler.com) | [www.ecler.com](http://www.ecler.com)