

WiSpeak Firmware Update

v1.0rX

This document details how to update a WiSpeak CORE device (TX) and all its paired loudspeakers (RXs) to a new firmware version.

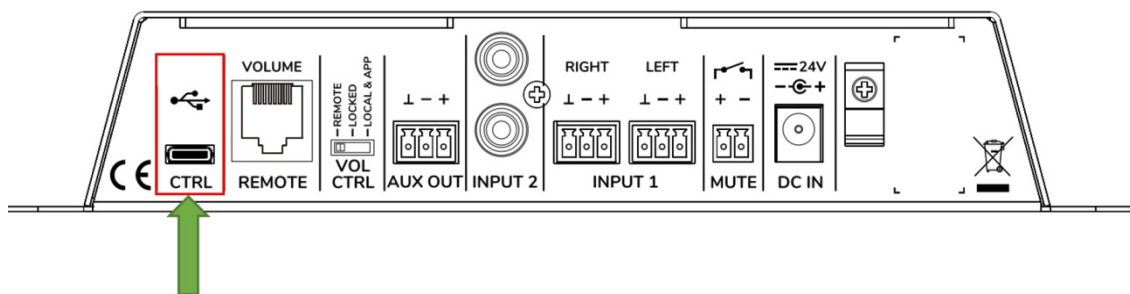
Necessary material:

- ✓ USB to USB-C Cable
- ✓ Windows PC

Following steps explain how to update a CORE device and several loudspeakers (those paired to it) at once.

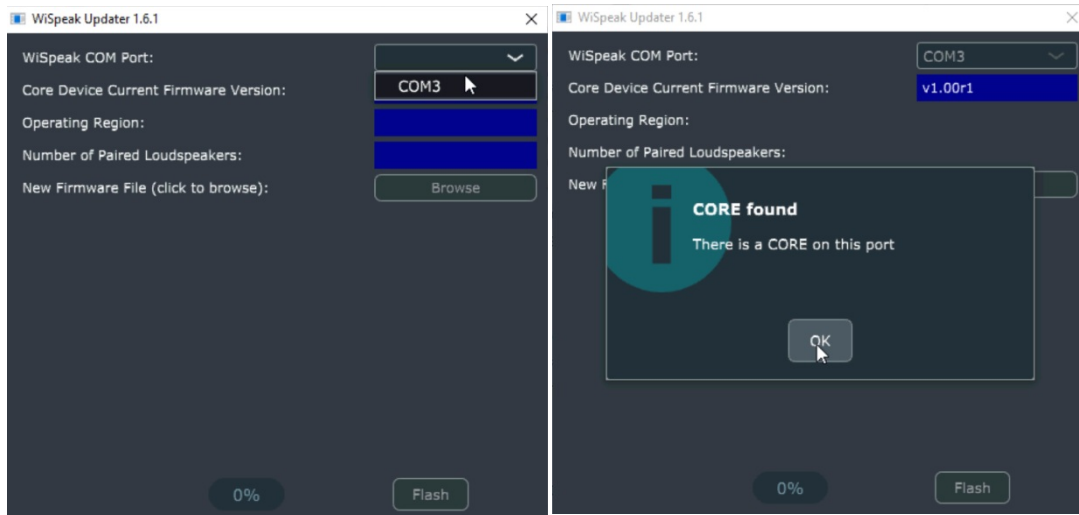
STEP 0: Preparation

- Unzip the **Ecler_WiSpeak_CORE_Firmware.zip** into a folder.
- Ensure that all the loudspeakers are paired to the CORE unit, and working correctly.
- It is mandatory to **NOT be connected through Bluetooth to the CORE during the update process**. Please, disable all the Bluetooth connection of all the devices connected to the CORE (smartphones, tablets, etc.)
- Power on the CORE. Then connect the CTRL port in the CORE device to the PC, using a USB to USB-C cable.

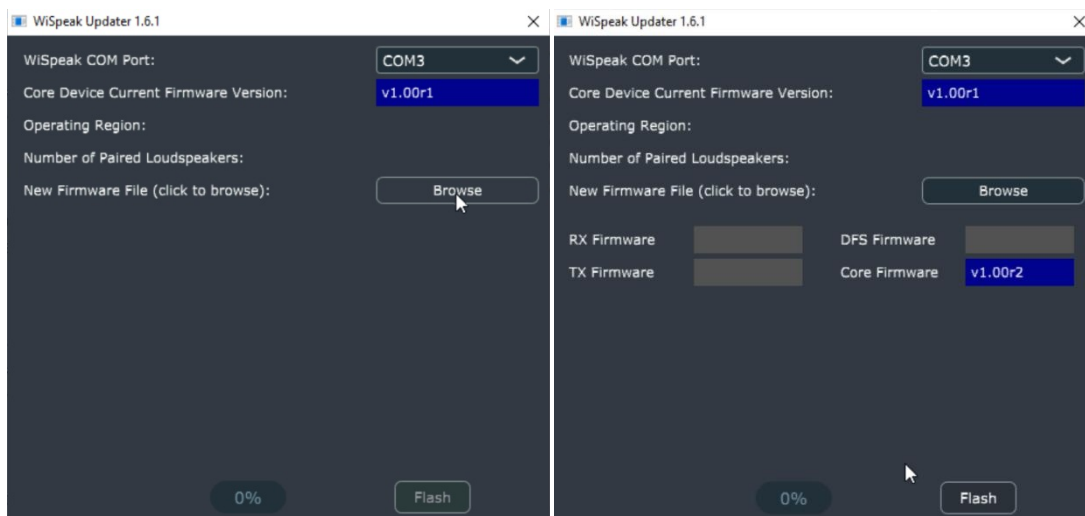


STEP 1: Update the system using the file **1-CORE-firmware-v1.0rX-NONE.bin**

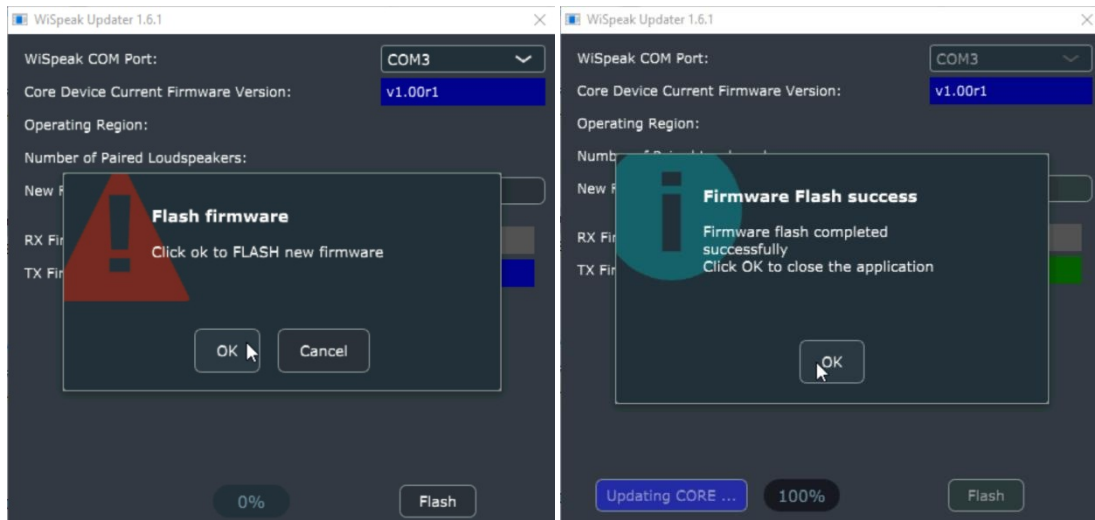
- 1- Execute ***ecler-wispeak-firmware-v1.6.2.exe***.
- 2- In the application, select the proper **WiSpeak COM Port**:



- 3- Browse and select the firmware file **1-CORE-firmware-v1.0rX-NONE.bin**:



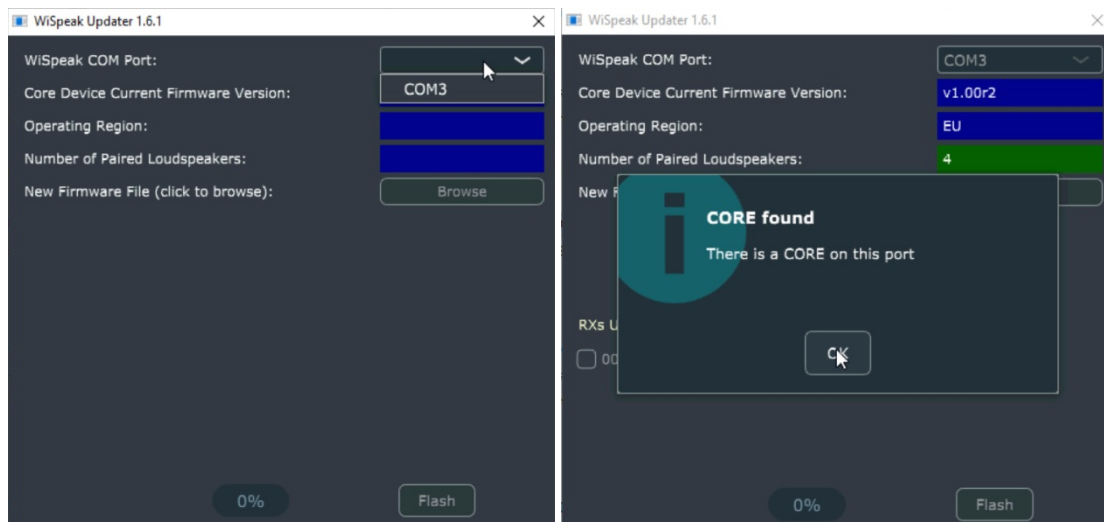
- 4- Press the Flash button and press OK in the Pop-Up warning. Wait until the process finishes.



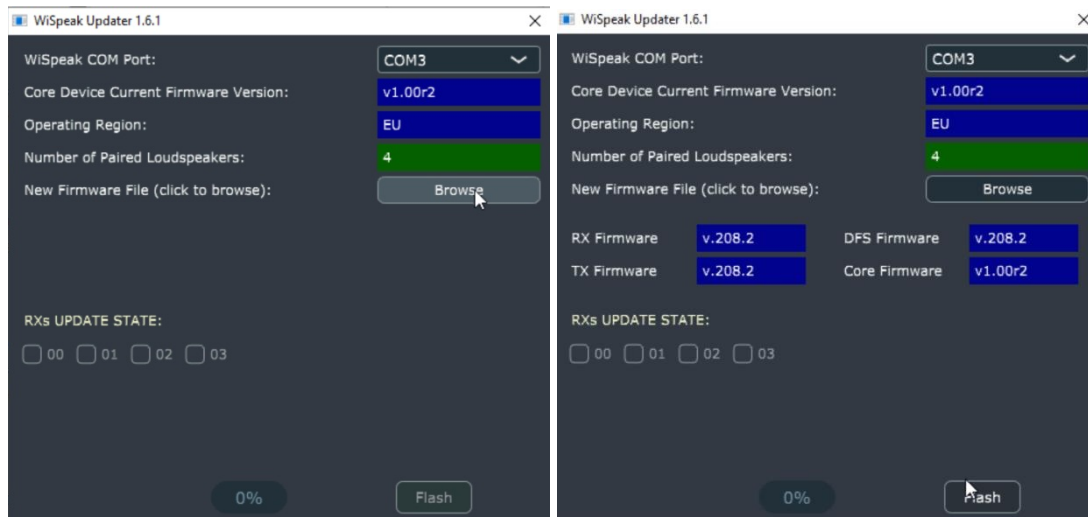
The device will be reboot automatically. Wait for the device to completely reboot to continue with step 2.

STEP 2: Update the system using the file **2-CORE-firmware-v1.0rX-208.2.bin**

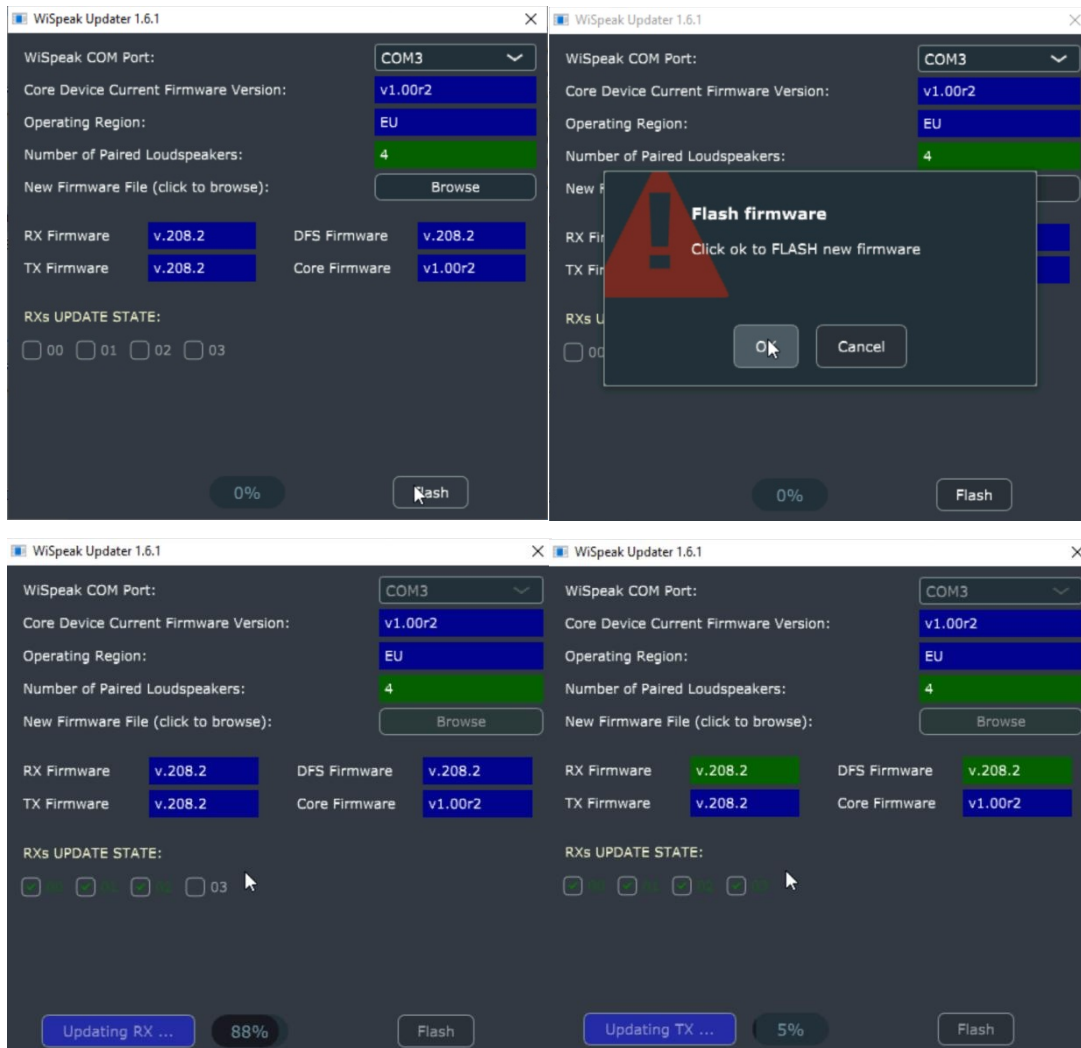
- 1- Execute ***ecler-wispeak-firmware-v1.6.2.exe***.
- 2- In the application, select the proper **WiSpeak COM Port**:

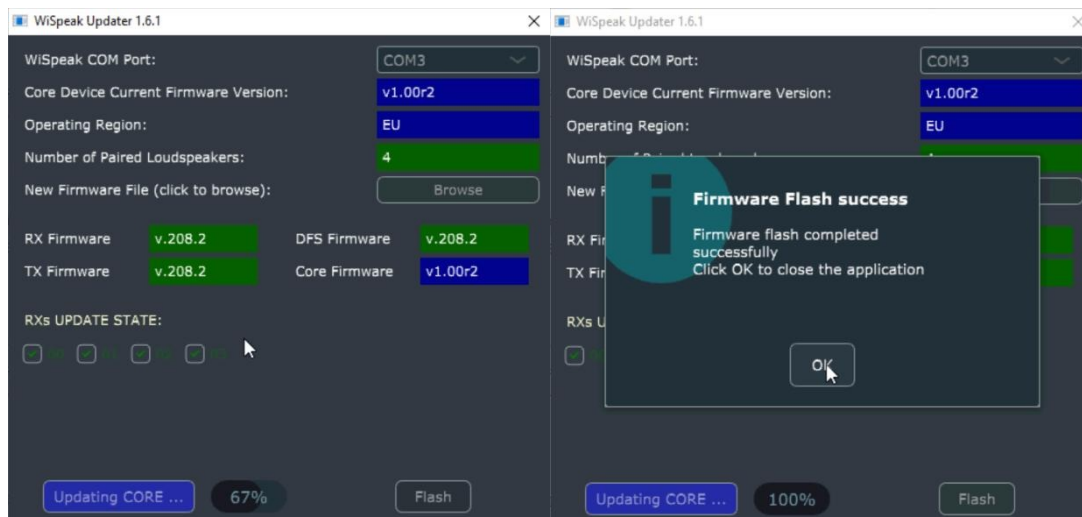


- 3- Browse and select the firmware file ***2-CORE-firmware-v1.0rX-208.2.bin***:



- 4- Press the Flash button and press OK in the Pop-Up warning. Wait until the process finishes.

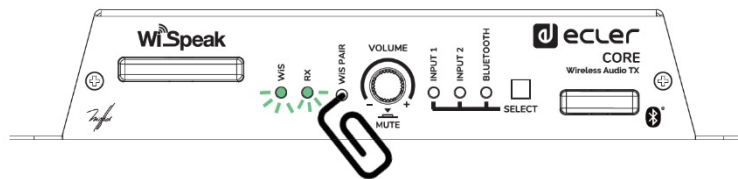




The system will automatically unpair all the loudspeakers during the update process.

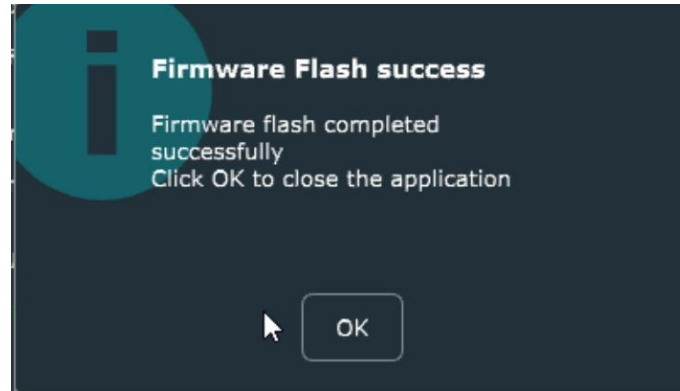
After a successful installation it will reboot automatically. After this reboot, it is necessary to pair again the loudspeakers to the CORE device.

Make a short press on the WiS PAIR key (using a clip e.g.), the WiS and RX LEDs will start to blink



Troubleshooting:

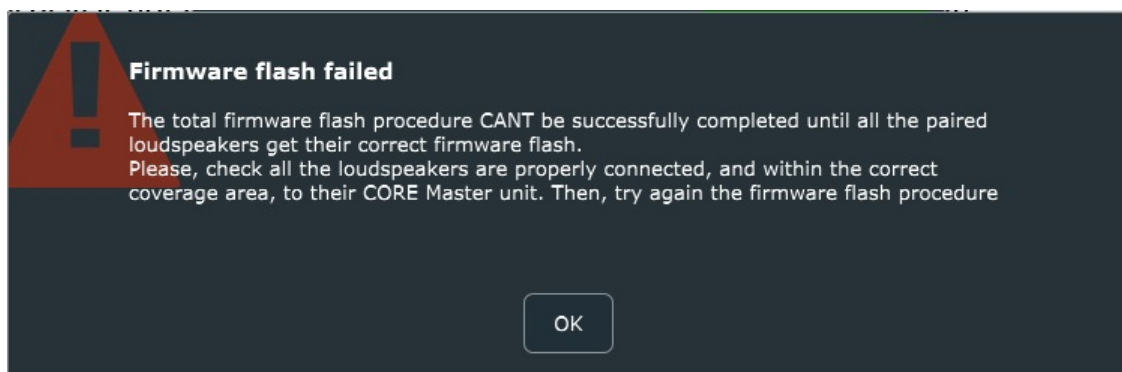
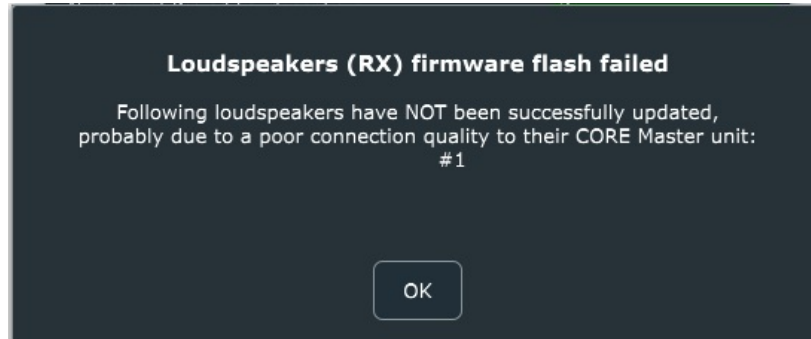
The update process can't be considered totally and successfully completed until the following pop-up message is displayed:



If a different message is displayed, the update process has to be repeated again.

Remember that the loudspeakers are automatically unpaired after a NON successful update. It will be necessary to pair them again in order to repeat the update process.

There is a special message to indicate that **one or more loudspeakers have not been updated totally, therefore successfully:**



The system will automatically unpair all the loudspeakers after a non successfully update. It is necessary to pair them again with the CORE, before performing the update process again.

The application will not continue with the update process until all the loudspeakers have been successfully updated. It is necessary to ensure all the loudspeakers are properly connected to the CORE unit, showing their STR LED permanently ON.