

eMOTUS5P

SURFACE MOUNT CABINETS

Powered Loudspeakers – Stereo kit



PRODUCT OVERVIEW

eMOTUS5P is a stereo loudspeaker kit including an active and a passive cabinet and performing 2 audio inputs: balanced and unbalanced. A professional and compact loudspeaker stereo kit, a user-friendly and cost-effective formula with a fantastic performance and a unique design that will easily fit in a massive number of multimedia applications: education classrooms, corporate meeting rooms, retail stores, etc. Available in white colour.

KEY FEATURES

- Stereo kit: 2x25W RMS
- 2-ways: 5" woofer + 1 " tweeter
- 2 analogue audio inputs (balanced- Euroblock and unbalanced-RCA)
- Sound source selection
- 2-band tone control
- Stereo/mono switch
- Auto stand-by
- Includes wall bracket and security steel cable
- Available in white finish

APPLICATIONS

- Classrooms
- Meeting rooms
- Multimedia presentations (in combination with video projectors, screens, etc.)
- Retail shops
- Museums and exhibitions
- Hotel rooms

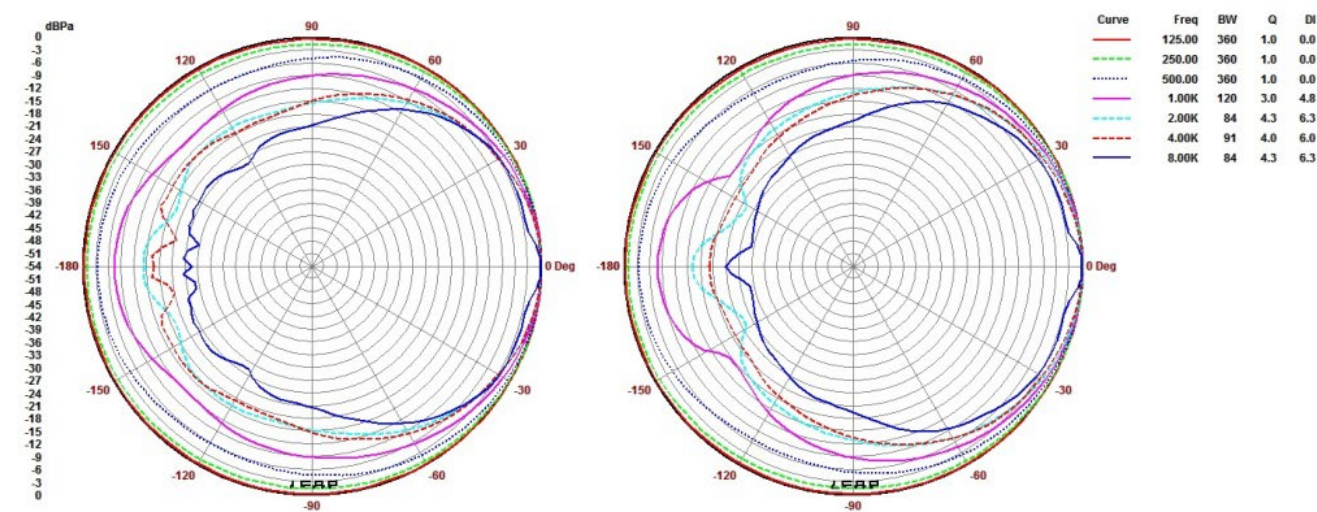
TECHNICAL SPECIFICATIONS

eMOTUS5P

System	
Effective frequency range ¹	85Hz – 20kHz
Coverage angle ²	120°x120° (HxV)
Power handling	25 W RMS / 100 W Peak
Sensitivity ³	77 dB (1W/1m)
Maximum SPL ⁴	91 dB continuous / 97 dB peak
Transducers	
Ways	2
Low frequency driver	5" woofer
High frequency driver	1 tweeter"
Nominal impedance	8Ω
Physical	
Enclosure material	ABS
Grill material	Aluminium
Mounting system	Cabinet
Operating temperature	Min: -20°C ; -4°F Max: 70°C ; 158°F
Operating humidity	<85% HR
Storage temperature	Min: -20°C ; -4°F Max: 70°C ; 158°F
Storage humidity	<90% HR
Included accessories	Wall bracket and security steel cable
Finished colour	White (RAL 9003)
Dimensions (WxHxD)	Not including brackets: 173 x 180 x 181mm / 6.81 x 7.09 x 7.13 in. Including brackets: 173 x 180 x 249 mm / 6.81 x 7.09 x 9.80 in.
Weight	4.2 kg / 9.26 lb 4.5 kg / 9.92 lb (including bracket)
Powered	
Power	2 x 25 W RMS / 100 W Peak
Audio inputs	2 analogue audio inputs (balanced-Euroblock and unbalanced-RCA)
THD + Noise @1kHz Full power	≤0.5%
Input sensitivity	525mV/22k Ω
CMRR	≥80dB
Tone control	±14dB
Mains	115 / 230VAC (selectable)
Auto standby time	2'30" (if Auto Standby is ON)
Power consumption (pink noise, 1/8 power @ 8ohm)	≤10.5W
Power consumption (pink noise, 1/3 power @ 8ohm)	≤23W
Power consumption Stand-by	≤3W

¹10dB below the sound pressure level at specified sensitivity²6dB below the sound pressure level than that at the direction of maximum level, Max. angle between 1 kHz and 4 kHz.³Measured on-axis, far field and referenced to 1 meter by inverse square law. Average from 100 Hz to 10 kHz.⁴Calculated from sensitivity and power handling specifications, exclusive of power compression

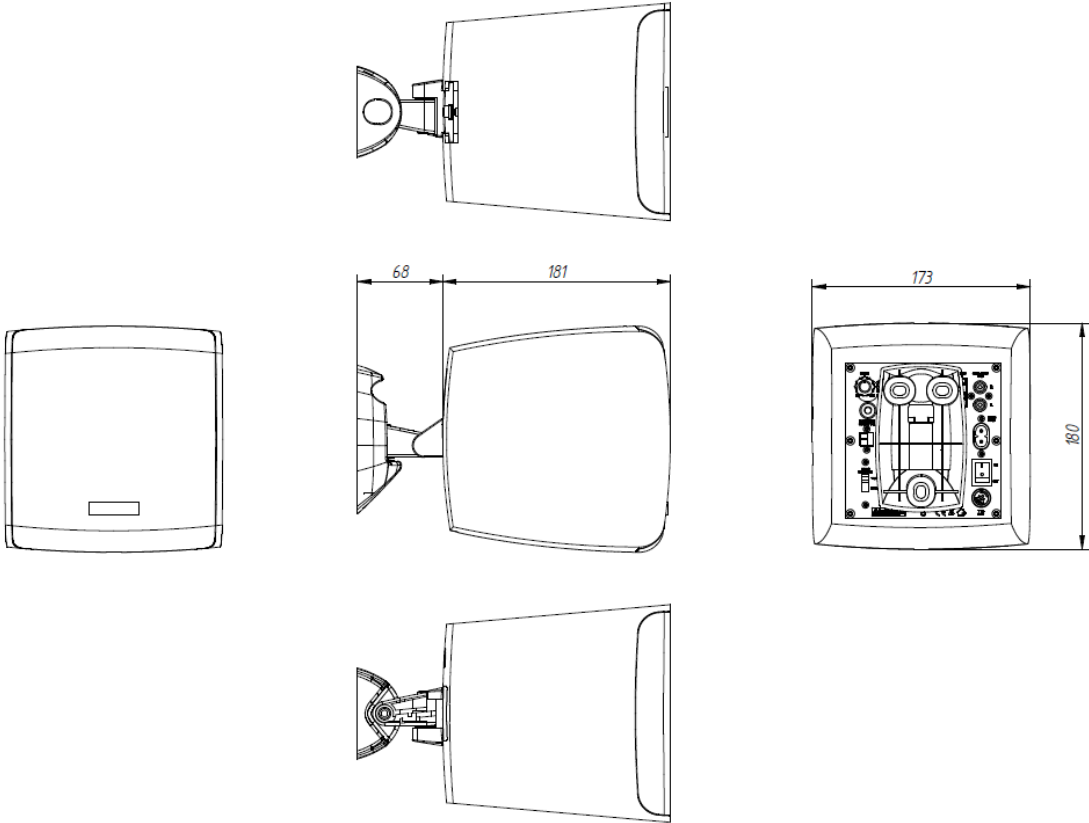
POLAR DIAGRAM



MECHANICAL DIAGRAM

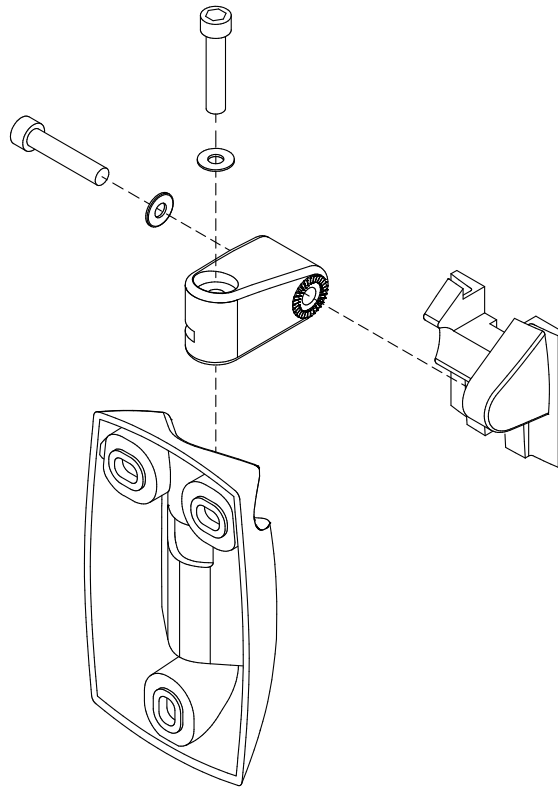


Ecler eMOTUS5PB/eMOTUS5P Mechanical Diagram



All the measurements are in mm

WALL SUPPORT MOUNTING DIAGRAM



A&E SPECIFICATIONS

The loudspeaker system shall be a two-way surface-mount stereo kit consisting of one active and one passive cabinet, each incorporating a 5" woofer and a 1" tweeter. The system shall be suitable for multimedia applications in classrooms, meeting rooms, retail spaces, and similar environments.

The power handling shall be 2 x 25 W RMS at a nominal impedance of 8 Ω , with a peak power handling of 100 W. The effective frequency range (± 10 dB) shall be from 85 Hz to 20 kHz. The sensitivity shall be 77 dB considering 1 W input signal at 1 meter distance, while the maximum continuous sound pressure level shall be 91 dB and 97 dB peak. The nominal coverage angle shall be 120° x 120° (HxV).

The system shall include two analogue audio inputs: one balanced (Euroblock) and one unbalanced (RCA), with input sensitivity of 525 mV / 22 k Ω and a common mode rejection ratio (CMRR) of ≥ 80 dB. It shall feature sound source selection, stereo/mono switch, 2-band tone control (± 14 dB), and auto standby function (2'30" delay).

The enclosure shall be made of ABS and the grille shall be made of aluminium. It shall be available in white (RAL9003) finish. Mounting shall be possible using the included wall bracket and security steel cable.

The loudspeaker shall operate on 115 / 230 VAC (selectable), with a power consumption of ≤ 10.5 W (1/8 power), ≤ 23 W (1/3 power), and ≤ 3 W in standby mode.

The dimensions shall be 173 x 180 x 181 mm (WxHxD) without brackets and 173 x 180 x 249 mm including brackets. The weight shall not exceed 4.2 kg (4.5 kg with bracket).

The loudspeaker shall be the ECLER eMOTUS5P.



All product characteristics are subject to variation due to production tolerances. **NEEC AUDIO BARCELONA S.L.** reserves the right to make changes or improvements in the design or manufacturing that may affect these product specifications.

For technical queries contact your supplier, distributor or complete the contact form on our website, in [Support / Technical requests](#).

Motors, 166-168 | 08038 Barcelona, Spain | Tel. (+34) 932238403 | information@ecler.com | www.ecler.com