


SEE FOR YOURSELF WHAT'S NEW!

Ecler, an ISE official technology partner, will be present at the 22nd edition of Integrated Systems Europe (ISE) 2026, held in our home city of Barcelona from February 3-6 at Fira Barcelona.



 **EclerPLEX** is an advanced AV digital platform designed to integrate its own digital hardware devices and software tools.

Enabling the deployment of comprehensive systems that include programming, control, and integration with both Ecler and third-party devices.

The platform features a flexible architecture that supports several types of project profiles (mixing matrix, priority and paging manager...) and also a custom sizing of them (examples: matrix sizes of 8×8, 2×12 10×24, 32×32... etc.).

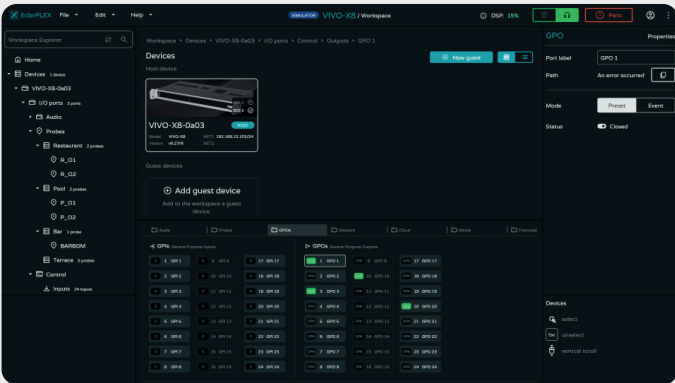
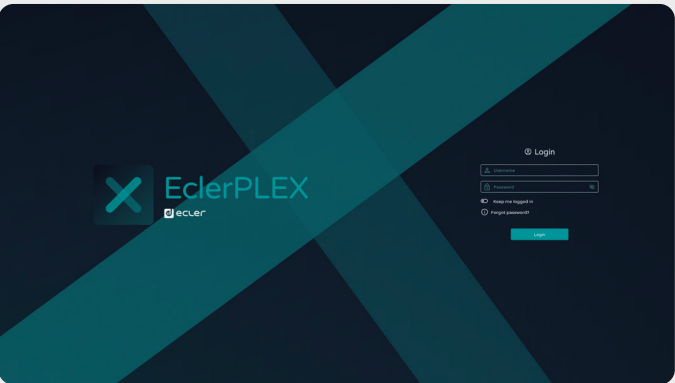
It allows users to also customize audio I/O strips in a modular way, using individual audio DSP blocks in a sequential arrangement. Several projects can be run simultaneously, up to the maximum I/O global and DSP capabilities of the HW Host unit in use. The Host unit is able to use Guest units' resources in its projects through a regular LAN, creating a mesh of EclerPLEX devices.

The platform is designed to be fast, flexible, and powerful, making it suitable for all types of applications.



<ul style="list-style-type: none">• Compatible with all OS: Web application managed through your favourite browser.	<ul style="list-style-type: none">• Advanced DSP: Provides high-quality audio processing capabilities in a user friendly way.
<ul style="list-style-type: none">• Scalability: The system can be expanded with additional devices to meet the needs of larger projects.	<ul style="list-style-type: none">• Global Events: Centralized management of resources and events across the network.
<ul style="list-style-type: none">• User-Friendly Design: Intuitive interface with tooltips and self-explanatory menus.	<ul style="list-style-type: none">• Integration and Customization: Scripts for integration and customization of system behavior (TBD).
<ul style="list-style-type: none">• EclerCLOUD Ready: Allows for remote management and monitoring of the system.	<ul style="list-style-type: none">• Mobile Application: Enables control of the system from a mobile device.
<ul style="list-style-type: none">• Integrated Audio Players: Four independent players with a single MicroSD slot, supporting playlist-based playback and featuring built-in signal generators (sine wave and noise). (TBD).	<ul style="list-style-type: none">• Probe audio at any point: Pre-listening of every channel at any point in the signal chain and allows users to probe audio and reuse it internally.

XPECT THE XTRA~ ORDINARY



VIVO HW devices are the EclerPLEX digital brains. VIVO can take the role of the host node in an EclerPLEX audio, control and integration project.

VIVO-X8 is an EclerPLEX compatible host processor with 8×8 analogue audio IN/OUT ports, and 4 GPI control ports. It is scalable up to a 24×24 total audio I/O, thanks to optional BIO-X8 I/O expansion units (up to a maximum of +2 x BIO units can be linked to the host unit).

VIVO-X8D8 adds to VIVO-X8 capabilities 8×8 Dante/AES67 digital audio IN/OUT ports, on top of the 8×8 analogue audio IN/OUT ports, and includes additional 8 GPIs and 8 GPOs.

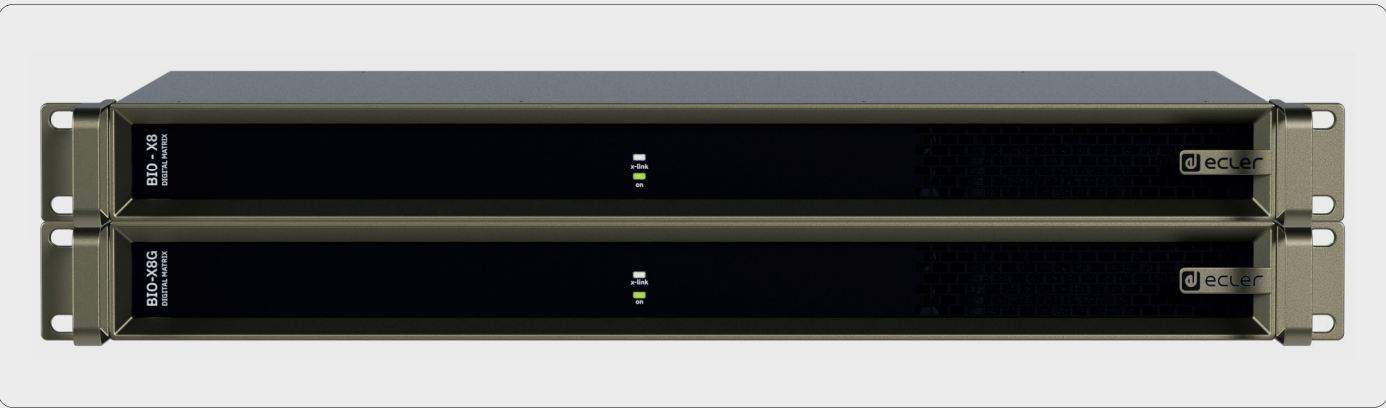
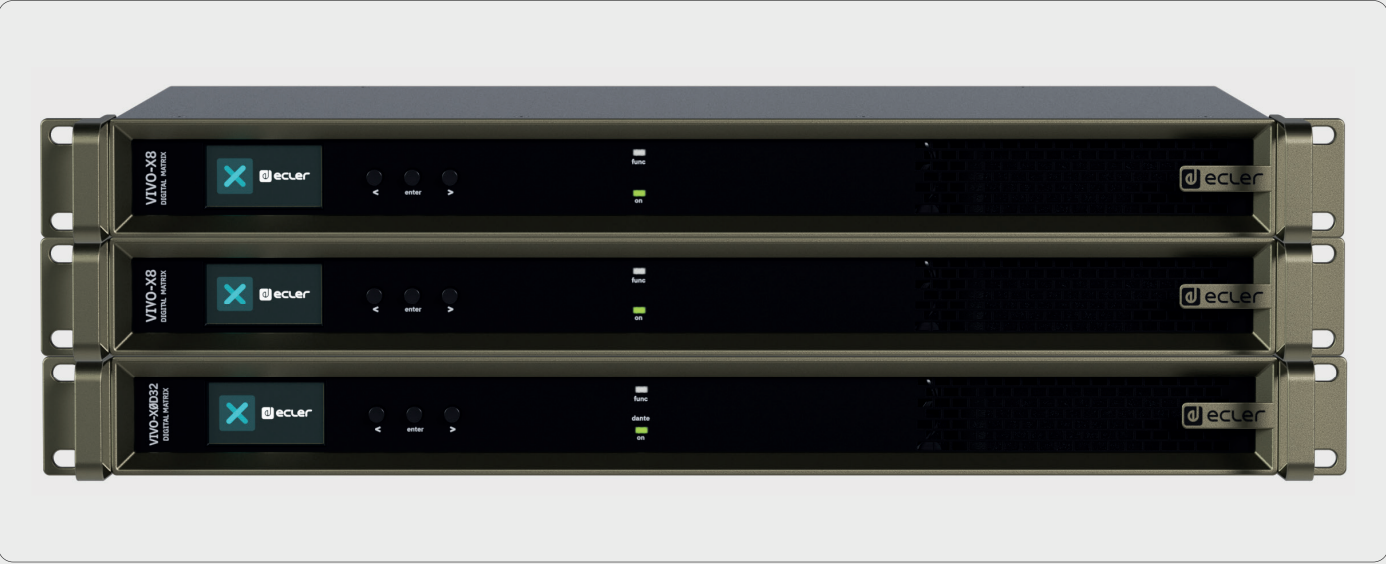
VIVO- XØD32 is an EclerPLEX compatible host matrix with 32×32 Dante/AES67 digital audio IN/OUT ports.

BIO devices are an affordable expansion interface that can easily scale up an VIVO digital matrix through it's X-Link ports.


The number of X-Link ports determines the maximum number of BIOs that can be connected to a VIVO.

BIO-X8 is an expansion interface that adds to VIVO default size, 8 input and 8 output analogue audio ports.


BIO-X8G is an expansion interface that adds to VIVO default size, 8 input and 8 output analogue audio ports, 8 GPIs and 8 GPOs.



	VIVO-X8	VIVO-X8D8	VIVO-XØD32	BIO-X8	BIO-X8G
Inputs	8 analogue	8 analogue + 8 Dante™/AES67	32 Dante™/AES67	8 analogue	8 analogue
Outputs	8 analogue	8 analogue + 8 Dante™/AES67	32 Dante™/AES67	8 analogue	8 analogue
Communication Interfaces	2 Ethernet + RS232 + 2 X-link	2 Ethernet + RS232 + 2 X-link	2 Ethernet + RS232 + 1 X-link	X-link	X-link
Remote control	4 GPI ports protocol / User Control Panels (Browser, app, PULSO)	8 GPI + 8 GPO ports protocol / User Control Panels User Control Panels (Browser, app, PULSO)	User Control Panels (Browser, app, PULSO)	User Control Panels (Browser, app, PULSO)	8 GPI + 8 GPO ports / User Control Panels (Browser, app, PULSO)

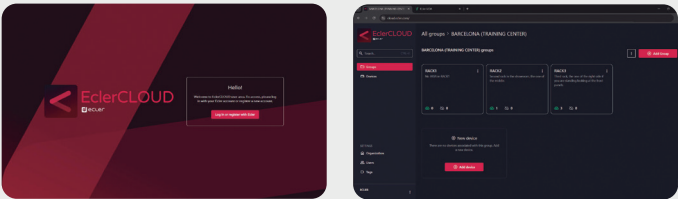
 **EclerCLOUD** empowers you to monitor, manage, and control your entire Ecler VIDA & HALO Series of amplifiers, with unparalleled ease and precision.


- **Real-time Monitoring Everything in Your Space:** Keep an eye on your connected Ecler devices, ensuring optimal performance and proactive issue resolution.
- **Enhanced Control through Deep Dive:** Gain insights into your AV infrastructure, enabling precise adjustments as if you were there.
- **Customized Options:** Tailor EclerCLOUD to your unique needs, creating a personalized experience that maximizes efficiency: groups, tags, smart search.
- **Remote Access:** Manage your AV systems from anywhere, at any time, through a secure and intuitive interface.
- **Real-Time Alerts:** Stay informed with instant notifications of any potential issues, allowing for proactive intervention.
- **Data-Driven Insights:** Leverage powerful analytics to optimize your AV operations and make informed decisions.
- **API for NOC System Integrators:** The EclerCLOUD API allows software developers to interact with the Ecler platform easily.

 Ecler next generation of **PULSO Series** digital remote wall panels, featuring three different models with an elegant minimalistic design.

The stunning PULSO panels, featuring aluminum frame and capacitive IPS display, are the perfect choice to load the different user panels from HUB, VIDA, HALO, DARA, EclerNet and EclerPLEX or any device that can be managed with its integrated browser. Additionally, PULSO can be configured as a UCP Server in an EclerNet project.r. The three models of 4", 5.5" and 10" are single unit EU electrical wall box and PoE.

PULSO Series	PULSO-4	PULSO-6	PULSO-10
Screen dimension and resolution	4" Capacitive 480×480	5.5" Capacitive 720×1280	10" Capacitive 1280×800
Construction	Aluminium frame (compatible with Standard EU 1-unit electric wall box)		
DC power supply	POE and external VDC power supply (not included)		



 The awarded **VIDA Series** of Amplifiers exemplifies Ecler's dedication to innovation, superior sound quality, versatility and sustainability.


Pioneering VersaPower technology empowers users to effortlessly optimize their sound systems, users can customize their audio setup to meet the specific requirements of any installation in both high and low impedance lines.

The VIDA Series also offers a comprehensive range of connectivity options and advanced DSP options, ensuring compatibility with various audio sources and systems. Analog and digital signals, calendar events, internal audio player and network connectivity via Ethernet and Dante™/AES67 protocol, the VIDA Series enables seamless integration into any audio setup, expanding its versatility and usability.

VIDA Series features managing capabilities including Ecler VIDA App to make both users and installers' lives easier, controlling several VIDA devices from the same app at the same time. The VIDA Web GUI Embedded Application available in 7 languages, eliminates the need for additional software installations, saving valuable time.

VIDA Series	VIDA-16Q	VIDA-24Q	VIDA-48Q
Inputs	4 analog input + 4 Dante™/AES67 Network Receivers + 1 embedded player + 1 embedded signal generator		
Outputs	4 Amplified Outputs Independent Output mode selection Lo-Z/Hi-Z, 70V/100V, 4Ω/8Ω/2Ω + 2 Auxiliary Line Level Outputs 4 Dante™/AES67 Network Transmitters		
Max output power ASYMMETRICAL @ 4Ω Single Output Driven @1kHz	1600W	2400W	2600W



 **Ecler HALO** is a series of multi-output amplifiers with networked DSP.

The line includes 2 and 4-output models, all usable as Low and High Impedance. Bridge between outputs should be used in High impedance or to double the power in Low Impedance. The built-in web interface (inherited from VIDA Series) allows easy programming and control of basic or advanced functions, thanks to different access levels.

HALO offers a comprehensive range of connectivity options, advanced DSP features, calendar events, internal audio player and network connectivity. All models include double Ethernet interface: one for setup and control and the second one for Dante™/AES67 protocol. Flexible end user control through customizable user panels, accessible via web GUI or mobile application.

HALO Series	HALO-2B300	HALO-4B150	HALO-4B300
Inputs	4 analog input + 2 Dante™/AES67 Network Receivers + 1 embedded player + 1 embedded signal generator	4 analog inputs + 4 Dante™/AES67 Network Receivers + 1 embedded player + 1 embedded signal generator	
Outputs	2 Amplified Outputs Output mode selection by pairs Lo-Z/Hi-Z, 70V/100V, 4Ω/8Ω	4 Amplified Outputs Output mode selection by pairs Lo-Z/Hi-Z, 70V/100V, 4Ω/8Ω	
Max output power @ 4Ω Single Output Driven @1kHz	300W	150W	300W



DARA Series of Amplifiers delivers exceptional audio power and flexibility through high-efficiency Class D technology combined with an advanced DSP and matrix for precise signal management.

Designed for professional installations, these amplifiers support Low and High Impedance configurations by pairs of channels, as well as Bridge mode, ensuring maximum adaptability.

The DARA Series is the ideal solution for demanding audio environments, combining power, efficiency, and advanced control in a compact design.

Key features include:

- Auto Standby for energy savings.
- Thermal and overload protection per channel plus an anti-clip system for reliable operation.
- Safety Euroblock connections for secure wiring.
- Front panel lock via rear DIP switch for tamper-proof control.
- Two network ports with integrated switch, enabling daisy-chain connectivity for multiple amplifiers.
- Full compatibility with PULSO Series and remote control via App (Android & iOS).
- Ecler Loudspeakers EQ Settings included.

AURA Series of amplifiers provides a versatile and efficient solution for professional installations, combining high-efficiency Class D technology with a robust and reliable design.

Fully compatible with Low and High Impedance configurations as well as Bridge mode, it ensures maximum flexibility for any project.

The AURA Series is designed to deliver power, efficiency, and advanced control, meeting the demands of the most challenging professional audio environments.

Key features include:

- Auto Standby for energy optimization.
- Thermal and overload protection per channel, plus an anti-clip system for safe operation.
- Secure Euroblock connections.
- Front panel lock via rear DIP switch for tamper-proof control.

AURA Series	AURA-1B300	AURA-2B150	AURA-2B300	AURA-4B150	AURA-4B300	AURA-8B150	AURA-8B300	AURA-2B1800
Single Output @ 4Ω (RMS)	300W	150W	300W	150W	300W	150W	300W	1800W
Single Output @ 8Ω (RMS)								1200W
Single Output @ 2Ω (RMS)								1900W
Single Output @ 100V (RMS)								1700W



DARA Series	DARA-4B150	DARA-4B300	DARA-4B600	DARA-4B900	DARA-8B150	DARA-8B300
Single Output @ 4Ω (RMS)	150W	300W	600 W	900W	150W	300W
Single Output @ 8Ω (RMS)			300W	500W		
Single Output @ 2Ω (RMS)			800W	1400W		
Single Output @ 100V (RMS)			600 W	900 W		



BOB Series offers versatile and cost-effective solutions for audio signal integration in professional AV environments.

The Ecler **BOB Series** expands its range of Dante/AES67 (Audio over IP) interfaces with the introduction of two new models: BOB-40 and BOB-44.

BOB-40 is a 4xMIC/LINE input Dante/AES67 Break Out Box. It allows up to four analog MIC/LINE signals to be converted into Dante channels and sent directly to the Ethernet network.

BOB-44 is a 4xMIC/LINE input and 4 LINE output Dante/AES67 Break Out Box, supporting both the conversion of four analog MIC/LINE signals to Dante channels and the reception of up to four Dante channels from the network, converting them to analog LINE outputs.

Both models feature:

- PoE (Power over Ethernet) for **easy installation** with compatible network switches (external AC power supply available as an option).
- **Flexible integration:** Use within EclerPLEX or EclerNet Dante/AES67 projects, or as stand-alone interfaces with any audio device featuring analog inputs and/or outputs.
- **Unified design:** The entire BOB Series now shares the same chassis, EASYFIX accessory, mounting options, ensuring a consistent look and streamlined installation across all models.

eMOTUS5DN is the latest evolution of one of Ecler’s most iconic loudspeakers. Renowned for its elegant design, outstanding audio performance, and versatility across professional installations.

With the addition of Dante compatibility, this new model seamlessly integrates into modern audio-over-IP environments, offering effortless connectivity, scalability, and reliability for advanced installations. The eMOTUS5 Dante preserves the timeless quality and acoustic excellence that made the original a classic, while embracing the future of digital audio distribution.

eMOTUS5DN	
RMS power / Peak power	25W / 100W
Connector	RJ45
Power Supply	POE+ / POE++
Others	Optional Power Supply



BOB Series	BOB-22	BOB-04	BOB-40	BOB-44
Analogue Inputs	2 MIC/LINE Bal. (Euro-block)	—	4 MIC/LINE Bal. (Euroblock)	
Analogue Outputs	2 Bal. (Euroblock)	4 Bal. (Euroblock)	—	4 Bal. (Euroblock)
Comms. Interfaces	1 Ethernet (Dante™/AES67 -2 flows)			



TOCA Series is Ecler’s new generation of remote control wall panels for audio systems, designed to seamlessly replace the WPa Series from 2026.

Featuring a modern, elegant, and discreet aesthetic, TOCA panels offer intuitive control and easy installation, meeting the needs of both installers and end users. The series includes a wide range of models—volume controls, source selectors, mixer panels, Bluetooth receivers, and Dante™ network input panels—compatible with standard EU and US wall boxes and available in black and white finishes to blend into any décor.



NIC Series redefines ceiling speaker performance through ART (Acoustic Resonator Technology), validated by laboratory measurements that demonstrate lower distortion and reduced structural vibration.



NIC Series	NIC-3	NIC-6	NIC-8	NIC-SB10	NIC-6DN
RMS power	20W RMS	50W RMS	70W RMS	100W RMS	25W RMS
Woofer / Tweeter	3"	6,5" + 1"	8" + 1"	10"	6,5" + 1"
Power Selector @70/ 100V	10W	50W / 25W / 12,5W	70W / 35W / 17,5W / 8,5W / 4W	100V: 80W/40W/20W 70V: 40W/20W/10W	—
Dimensions (øxD)	Ø113×90mm	Ø267×168mm	Ø314×180mm	Ø402×271mm	Ø267×168mm



Lower Distortion, Cleaner Sound: THD measurements show a clear reduction in total harmonic distortion in the ART version compared to a conventional closed-box design, especially in the low-frequency range, resulting in cleaner and more transparent audio reproduction.

Reduced Structural Vibration: Laboratory measurements show a significant reduction in mechanical vibration when using ART technology, evaluated directly from vibration acceleration values (m/s²) in the critical 50–200 Hz range:

- Mounting panel: Up to 34% less vibration transferred to the ceiling structure, reducing resonance and unwanted low-frequency excitation.
- Speaker frame: Up to 12% less vibration at the speaker structure itself, contributing to improved mechanical stability and acoustic clarity.

Controlled Low-Frequency Energy: By converting unwanted acoustic energy into non-audible displacement, ART minimizes resonance and coloration caused by ceiling structures, while maintaining controlled low-frequency extension.

IP66 Protection: Engineered for reliability in demanding conditions, including humid and dusty spaces.

Front Access Connections & Tapping: Streamlines installation and system configuration, saving time for integrators.

MIA Series of Column Loudspeakers, blending sound quality with an aesthetically pleasing and unique design.

MIA-40 is an ultra-compact column speaker, just 10 cm tall and 2.2 cm wide, offering a discreet yet powerful audio solution for museums, heritage sites, conference rooms, and high-end commercial spaces. Its lightweight, visually discreet design and remarkable performance make it ideal for installations where visual impact must be minimal.

Paired with the **MIA-BR16** bass reinforcement, the system supports up to four MIA-40 units, delivering a full-range audio experience. Key advantages include an aluminum grille to prevent rust, and a competitive price point.



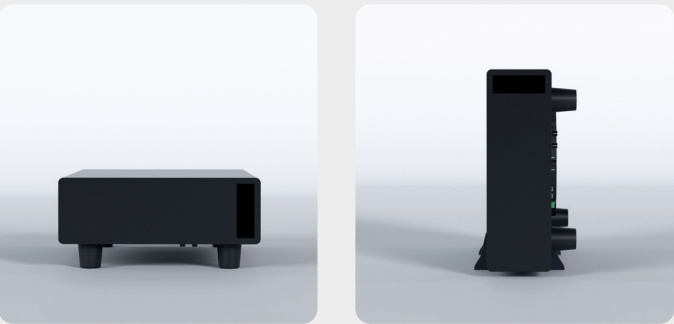
MIA Series	MIA-40	MIA-BR16
RMS power	16W RMS (16Ω)	80W RMS (8Ω)
Woofer / Tweeter	4 × 0,5"	6,5"
Power Selector @100V	no	80W/40W/20W
Dimensions (øxD)	24,6 × 113,1 × 14,5 mm / 0.97 × 4.45 × 0.57 in	350 × 290 × 150 mm / 13.78 × 11.42 × 5.91 in

POWERFUL BASS SOUNDS

EDGE-SB10P21 is an ultra-compact powered 2.1 system that combines a 10" subwoofer (120 W RMS) and a stereo amplifier (2 × 100 W RMS @4Ω) in a single enclosure.

It features RCA and Euroblock inputs, Euroblock outputs for satellite speakers, adjustable low-pass filter (50–250 Hz), auto-standby, phase switch, and independent MASTER and SUB volume controls. Designed for versatile installation—under seats, on tabletops, or wall-mounted with the included bracket—it delivers powerful bass in small spaces.

EDGE-SB10P21	
Power handling	120W RMS / 480W Peak EXT.OUT: 4Ω: 2*100W RMS, 8Ω: 2*50W RMS
Woofer	10"
SPL 1W/1m	95dB (1W/1m)
Nominal Impedance	4Ω-8Ω
Dimensions (WxHxD)	635 × 181 × 414 mm / 25 × 7.13 × 16.30 in



MARS-4 and **MARS-8** are 4×4 and 8×8 HDMI matrix designed for professional environments that require flexible routing of 4K video and audio signals.

It combines intuitive control and management to simplify day-to-day operation in complex AV setups. Advanced features include multi-viewer and video wall capabilities with various display configurations. Each input source can be independently scaled, and seamless switching guarantees fluid transitions without frame drops. It offers a reliable solution for dynamic presentation and distribution needs.



MARS	MARS-4	MARS-8
In / Out	4 × 4 HDMI 18 Gbps, HDCP 2.2	8 × 8 HDMI 2.0 18 Gbps, HDCP 2.2
Resolution	Up to 4K up to 60Hz, 4:4:4, 12-bit	Up to 4K up to 60Hz, 4:4:4, 12-bit
Audio	Independent audio matrix - Analogue / Digital Out connectors - embedding / de-embedding feature	Independent audio matrix - Analogue / Digital Out connectors - embedding / de-embedding feature
Main Features	Seamless video matrix, Video wall, Multiviewer, Downscaling	Seamless video matrix, Video wall, Multiviewer, Downscaling
Remote control	Web, TCP, Telnet, RS-232, IR, CEC, Smart EDID management	Web, TCP, Telnet, RS-232, IR, CEC, Smart EDID management

MAIA-16 is a 16×16 HDMI matrix designed for professional environments that require flexible routing of 4K video and audio signals.

It combines intuitive control and management to simplify day-to-day operation in complex AV setups. It offers a reliable solution for dynamic presentation and distribution needs.

MAIA-16	
In / Out	16 × 16 HDMI 18 Gbps, HDCP 2.2
Resolution	Up to 4K up to 60Hz, 4:4:4, 12-bit
Audio	ARC and de-embedding features
Main Features	Video matrix, Downscaling
Remote control	Web, TCP, Telnet, RS-232, IR, CEC, Smart EDID management



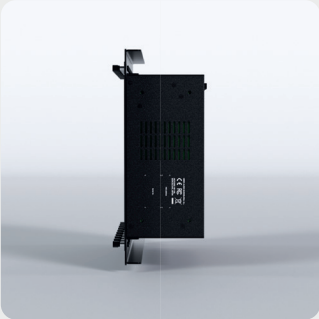
THIA-2 is a 4K Video-over-IP JPEG2000 system that enables secure, low-latency HDMI distribution with industry-leading image quality.

THIA-2T transmitter and THIA-2R receiver offer a versatile set of features tailored for professional networked environment, including advanced control options with VEO-XCTRL4D controller and integration for professional video systems.

THIA-2	
In / Out	JPEG2000 Video over IP distribution system
Resolution	4K up to 30Hz (4:4:4)
Audio	Embedding / de-embedding feature
Main Features	Video wall, symmetric / Asymmetric distribution, Multiviewer (via controller box)
Remote control	Web, TCP (via controller box), RS-232, IR, CEC, Smart EDID management



THIA-RK is a 6U rack mount shelf designed for the VEO-4D and THIA series, offering a practical and professional solution for organized installations.



It supports both front and rear mounting, and includes all necessary accessories to securely install up to 10 transmitter or receiver units, making it ideal for structured AV system integration

Made in Barcelona.
Thinking forward.
Ergonomics & design.
Products living forever.
A sustainable brand.

Ecler Proaudio S.L.
08040 Barcelona, SPAIN
T. (+34) 932 238 400
www.ecler.com
information@ecler.com

